

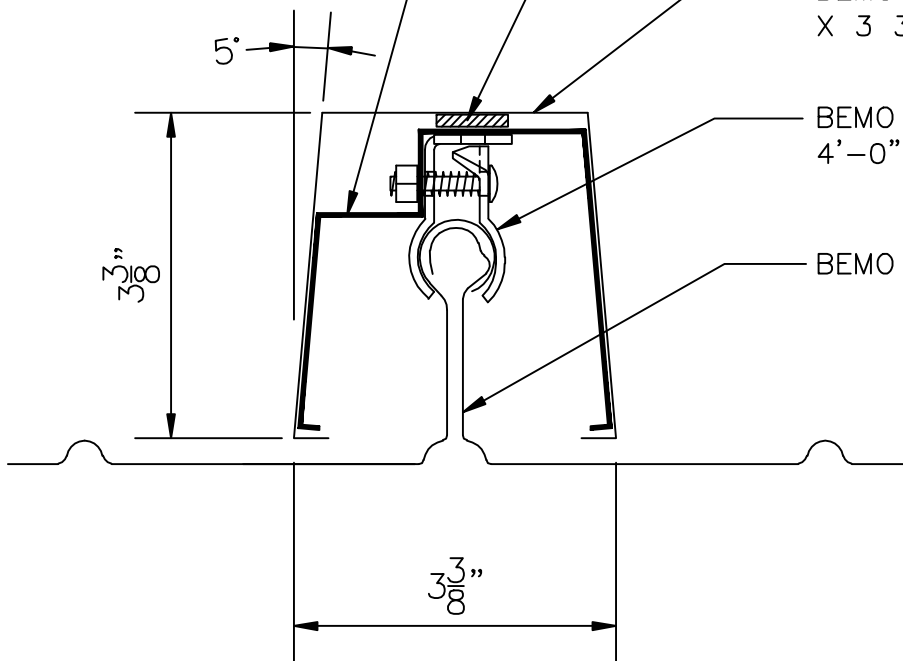
BEMO BATTEN CLIP @
4'-0" O.C. (MAX.); ATTACH
TO UTILITY CLAMP

FOAM TAPE CHSHION

BEMO BATTEN (3 3/8"
X 3 3/8")

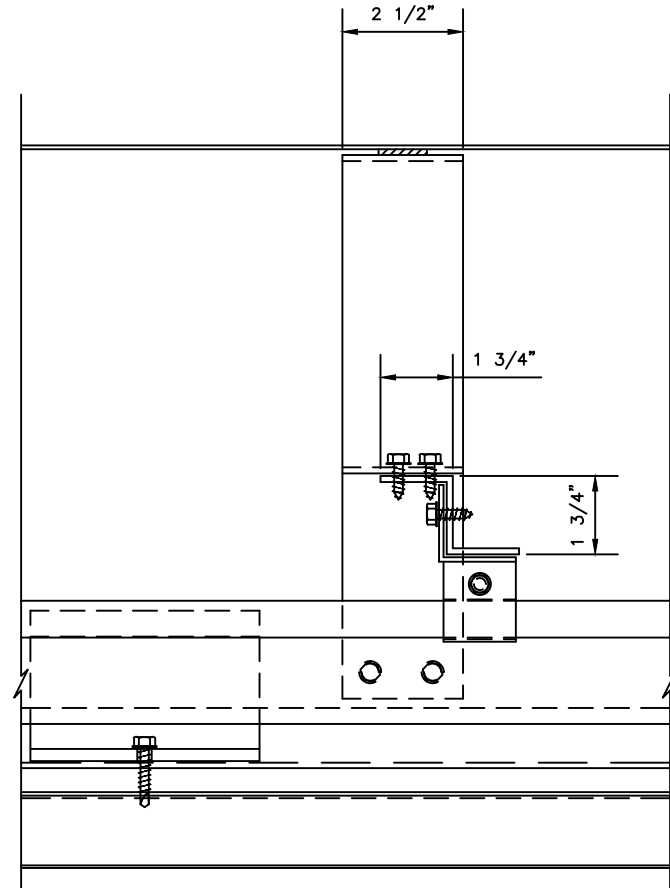
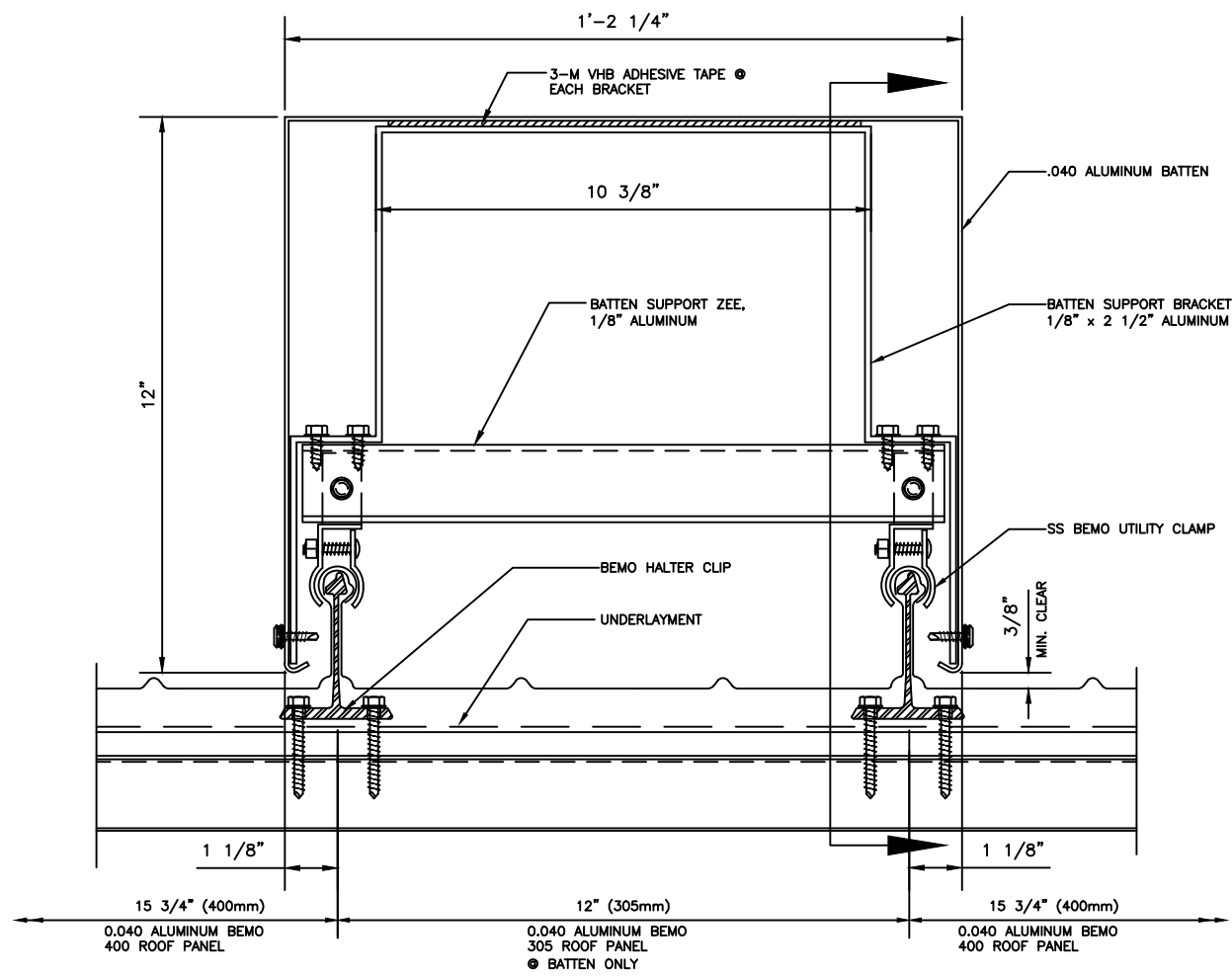
BEMO UTILITY CLAMP @
4'-0" O.C. (MAX.)

BEMO ROOF PANEL

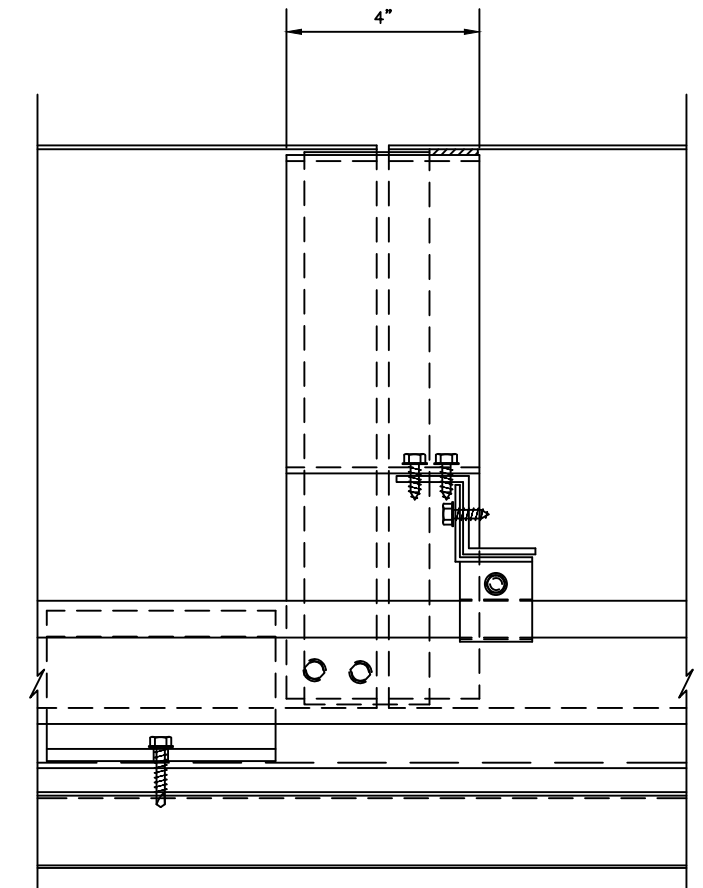


BEMO PANEL WITH
BATTEN ASSEMBLY

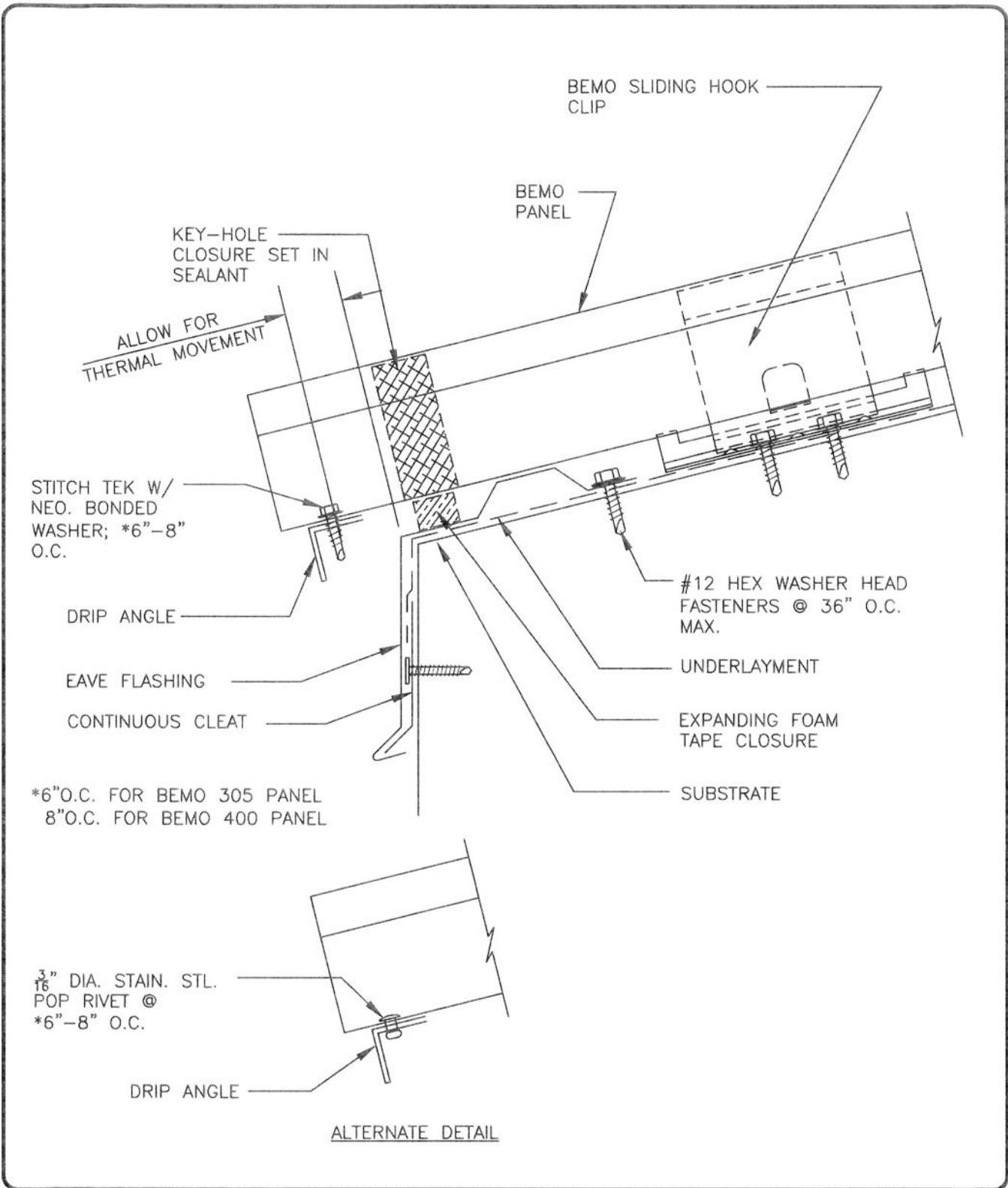





SECTION

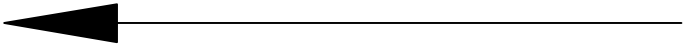


SECTION @ SPLICE



 <p>BEMO-USA Xtreme Roofing Solutions p: 1.877.530.2366 TAMPA, FLORIDA • PHOENIX, ARIZONA • GREENVILLE, TENNESSEE</p>	PANEL: BEMO	REVISION: 1
	DETAIL: EAVE (FLOATING)	PAGE: 1 OF 1

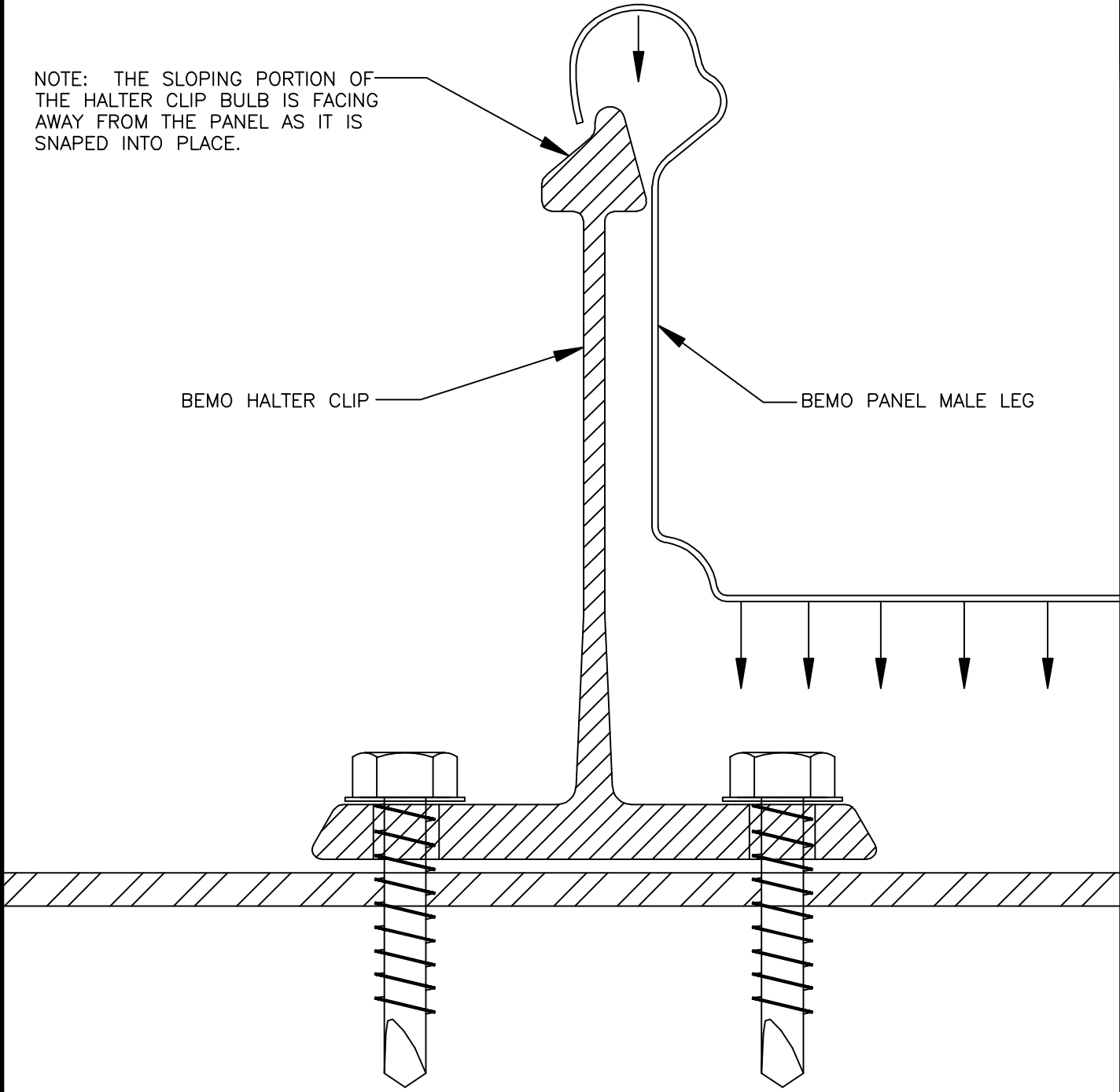
DIRECTION OF PANEL INSTALLATION



NOTE: THE SLOPING PORTION OF THE HALTER CLIP BULB IS FACING AWAY FROM THE PANEL AS IT IS SNAPED INTO PLACE.

BEMO HALTER CLIP

BEMO PANEL MALE LEG



BEMO PANEL HALTER CLIP

BEMO·USA
The New Dimension In Metal Roofing
p: 1.800.926.2366



PANEL:
BEMO

DETAIL:
**HALTER INSTALLATION
DIRECTION**

REVISION:
0

PAGE:
1 OF 1